



United Cargo of South Asia (UCSA)

A Complete Cargo Solutions

www.ucsanepal.com



Overview

- About Us
- Message from Chairman
- Our Services
- Company Profile
- Vision and Mission
- Air Cargo
- Sea Cargo
- Inland Cargo
- Courier Services
- Collection and Packaging
- Custom Clearance
- Documentation
- Safe and Secure Warehouse
- Cargo Insurance
- Label and Tag Management
- Domestic Distribution
- Logistic Network
- Team Members
- Contact Details



www.ucsanepal.com

ABOUT US



www.ucsanepal.com

Welcome to United Cargo of South Asia (UCSA). We always try to maintain the target of delivery of shipments in best possible way. To our valued clients, we provide Worldwide Cargo, Forwarding and Courier services. Our main goal is to serve our valued clients and professional partners throughout Nepal and the world with highest satisfaction.

Our team creates long-term customer relationships of trust through the company's "3-C culture". Customer Focused, Creative Solutions and Community Driven with the main motto of always one step ahead, in every service. We have been associated with renowned international companies for our overseas operation. We would like to assure and guarantee the safe and secured delivery of all the shipments of our respective clients.

UCSA is the first pioneer organization where the logistics department is solely handle by a lady. Rita Dahal has been involved in this field with dedication and has proved her ability. Looking at Nepal scenario, we have seen that ladies are not in the leading position who is conducting such business.



Message from Chairman



www.ucsanepal.com

Dear All,

We all are challenged in the business world. We have come a long way and has achieved notable growth and expansion in the field of Freight Forwarding and Logistics Services. We all want to be a part of a team that leaves a Legacy and it is remembered for years on what we have accomplished.

Our cargo specialists have years of experience and part of our skill is the ability to listen to your requirements. Whether you are exporting by Air or Sea, we know we can ease the movement of your merchandise. We guarantee all attention and care needed for the client's transportation requirements. We hope to be of service to you and so have the opportunity to demonstrate our ability.

We Believe in continually improving our services and add new and unique features to our services. Our organization values lie in the happiness of our staffs, continuous support and appreciation from our valued customers.

Thanking you!

Ms. Rita Dahal
Chairman



- Air Cargo**
 - Air Import
 - Air Export
- Sea Cargo**
 - Sea Import
 - Sea Export
- Courier Services**
- Collection & Packing**
- Custom Clearance**
- Documentation**
- Safe & Secure Warehouse**
- Cargo Insurance**
- Label and Tag Management**
- Domestic Distribution**
- Perishable Cargo**
- DGR Cargo**
- Project Cargo**
- Live Animal Cargo**
- B2B Cargo**



Our Services

www.ucsanepal.com

COMPANY PROFILE



www.ucsanepal.com

Name of Company: - United Cargo of South Asia Pvt. Ltd.

Company Address: Baluwatar, Kathmandu Nepal

Tel: +977-01-4414603, 01-4413562

E-mail: info@ucsanepal.com

Business Nature: Logistic Management

Airport: TIA, Kathmandu

Established Date : 2074/075

Vision and Mission



www.ucsanepal.com

Vision

Connecting people, businesses and communities to a better future through cargo and courier forwarding services.

Mission

- ❑ To continually provide a service level above the expectation of our customers, and to provide a happy and prosperous environment for our staffs and Sub-Contractors.
- ❑ To providing first-class services to our customers 24/7 supports with reasonable rates on a consistent basis.
- ❑ Worldwide Delivery Services using only the top carriers with high quality and on time in a professional manner.
- ❑ To be recognized as the most Reliable and cargo and Courier Company in single window trusted solutions by continuously enhancing and expanding our 3PC services.
- ❑ To adopt continuous innovation in technology and IT infrastructure.
- ❑ We will continuously challenge ourselves to exceed our customer's expectations by providing leading edge solutions to their needs.

Air Cargo

Air cargo involves movement of cargo by Air Transport to the nearest destination as required by the customer.

Air cargo basically transported from the Nepal Tribhuvan International airport.

Service: To nearest destination airport / any destination in the world.

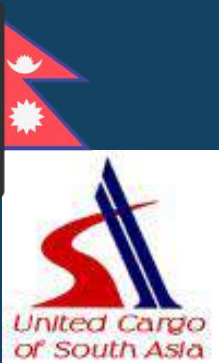
Shipment times: 4-10 days /depending on the season and flight availability.

Carrier/airlines used: Cathay pacific airways, Air Arabia, Malaysian airways, Salam Air, Singapore airways, Qatar airways , Air Jajeera, Turkish airways, Vistara Air, Emirates airways, Druk Air, Bhutan Air and other international airlines.

Required Documents :

- Commercial invoice
- Packaging list
- Airways bill
- Certificate of Origin
- GSP (Generalized system of preferences)

No matter the size, type and frequency of your cargo, we have a service that fits your needs.



Sea Cargo

Sea Cargo is normally used for heavy and bulk shipment to nearest seaport.

Freight Forwarding company are allow to use Calcutta or Vizag seaport for Import or Export shipment.

Service: To nearest seaport

Shipment time: 30-45 days depending on the destination

Insurance: We recommended to purchase insurance.

Weight/ volume: FCL-full container load (20 footer, 40 footer, 40 footer high cube)

LCL-less than full container load minimum 2 CBM or 500 kgs needed.



Sea Cargo (Contd...)

Air- Sea cargo:

Cargo is forwarded through Bangkok/Singapore Airport

Service: To nearest Airport

Shipment time: 7-10 days depending on the destination.

Carrier: By air to the nearest airport and to the destination by road.

Insurance: Recommended to purchase

Weight/volume: No limit but minimum weight should be available.

Required Documents:

- 1) Commercial invoice
- 2) Packaging list
- 3) Bill of lading
- 4) Certificate of origin
- 5) GSP (Generalized system of preferences)
- 6) Payment in LC/TT

No matter the size, type and frequency of your cargo, we have a service that fits your needs.



Inland Cargo

Inland transportation covers all transport activities that go over land i.e. all modes but air and maritime transport. Hence, it includes transport by road, rail, inland waterways and pipelines (goods only).



Courier Services

We provide express courier service to globe in fastest and quickest routes. Courier service is used for parcels and documents.

Service: Door to door Delivery

Shipment time: depending on the destination

Carriers: DHL/FedEx/TNT/UPS/ARAMEX/DPEX/SKYNET/GLS/AIRMAIL/EMS

Required Documents:

- 1) Invoice
- 2) Packaging list
- 3) Payment in cash/bank



Collection & Packaging

Our team members collect cargo / courier / parcel from any place in a most efficient and flexible manner as per customer's one phone call, by email or by social media. We carefully pack your goods to ensure they arrive safely and in the same condition as when we received them.

We do:

- 1) Export packing
- 2) Metal or wooden crating
- 3) On site packing
- 4) Commercial goods & household removals packing
- 5) Including full documentation

Packaging materials:

- 1) Carton boxes for all garments items.
- 2) Jute & plastic (carton box with plastic inside and jute-wrapping outside).
- 3) Wooden boxes for all the handicraft and fragile items.
- 4) Air bubble sheet, cutting paper and foam for all the handicrafts and fragile items.
- 5) Stretch wraps film for air shipment as required.



Custom Clearance

We have Authorized Custom Broker to the main Transit/Entry point of Nepal. We are offering wide range of customs clearing program to the customers which will benefit in Import & Export customs clearance by our professionals through any Customs Entries/Exits of Nepal. Our commitment is to clear your consignment in time and deliver to your warehouse safely. We are handling custom clearance work since our establishment. Our services in this area are focused to save clients from complex administrative processes.

Our Custom Clearance services include:

1. Custom documentation
2. Examination of shipment
3. Handling of stuffing

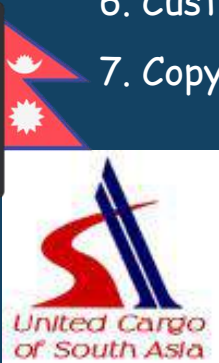


Documentation

Export & import documents will be prepared as per government rules and need of destination country.to save clients from complex administrative processes.

Required documents:

1. Commercial invoice
2. Packing list
3. Certificate of origin (chamber of commerce).
4. GSP(Generalized system of preference) Form 'A'.(required for some countries)
5. Letter of credit (LC) or advance payment statement received from the bank (APC).
6. Custom Declaration form (yellow page).
7. Copy of firm/ company registration certificate.
8. EXIM code certificate.
9. Airway bill (AWB).
10. Authorization Letter for clearance on behalf of shipper/exporters.
11. Certificate issued by Handicraft association of Nepal. For Nepalese handicrafts/ Goods.
12. Authorization letter from archeology department.(If required).
13. Plant Quarantine Certificate/ Phyto Sanitary Certificate.
14. Lab Test Report (Department of Food Technology and Quality Control).
15. Certificate of insurance policy
16. Import license if applicable.
17. Foreign Exchange Declaration form of Nepal Rastra bank (Central Bank of Nepal).



Documentation (Contd...)

SPECIAL PERMISSION WRITTEN ITEMS:

The following is a list of items that require special written permission from the government departments before export

Department of Archaeology

Any bronze, brass, copper or silver statue, any Thangka paintings, illustrated manuscripts, wooden masks or woodcarvings and other carved goods.

Department of Veterinary Science

The meat, skin or flesh (dried or otherwise) of wild or domestic animals.

Department of National Parks& Wildlife

Skulls, horns tails, hooves or other body parts of domestic animals.

Plants , flowers

Mine Department

Stones/rocks

Department of Forest

Incense powder, rudraskshi beads

Plant Resource Department

Ayurvedic/ herbal oil /marc/ extracts/ crude.



Safe and Secure Warehouse

Warehouses in different sizes can be arranged to our valued customers. We provide ordinary and urgent Cargo services in Nepal for distribution of your goods or transporting your personal effects in an efficient and professional manner. Through our extensive network of dedicated warehousing and distribution operations, we enable you to react to rapid changes in the market place while minimizing your investment risks and operational costs.

Warehousing Services

Cargo warehousing services include:-

- 1) Adequate insured private warehousing space.
- 2) Safe storage of goods.
- 3) Control checks on entry & exit of goods.
- 4) Helps our clients to reduce fixed overheads, increase efficiency, cut down valuable management time and offer great efficiency



Cargo Insurance

Insurance offers against all risks of physical loss or damage during shipping.

Documentation:

- Claim form
- Original insurance certificate/ policy
- Original bill of lading
- Invoice
- Packing list
- Delivery order
- Official damage/survey report
- Letter of claim against the carriers and their reply
- Estimated cost of repair
- EIR (equipment interchange receipt)
- Ship accident report and complete of its document
- Police report (in case of theft or traffic accident)
- Picture of damage



Label and Tag Management

Label and tag throughout the manufacture warehousing distribution shipping and sales processes.



www.ucsanepal.com

Domestic Distribution

We also play a leading role in the domestic cargo transportation within Nepal. We provide service via air or by surface mode depending on the urgency and the requirement of the customers. Whether customer-needs are urgent or specialized, we provide them a cost effective, flexible set of logistics options to keep them comfortably stay in their supply chain solutions. Shippers expect delivery methods that are flexible yet guaranteed. We have all that to meet requirements of them by leveraging our network and expertise. We can provide a seamless transition for customers within Nepal as we do worldwide. In our Domestic Cargo services we can arrange customer specific door-to door, door-to-airport or point-to point service solutions such as:

- ❑ Priority + Service: Same day air or surface solutions
- ❑ Time Definite Service: Next day, Second day or Third day air and surface solutions
- ❑ Cross Border Service: For India via air and surface solutions
- ❑ Direct Delivery Service: Import delivery to store or to the consumers
- ❑ Value Added Service: Project and Specialized cargo handling and delivery service



Logistic Network

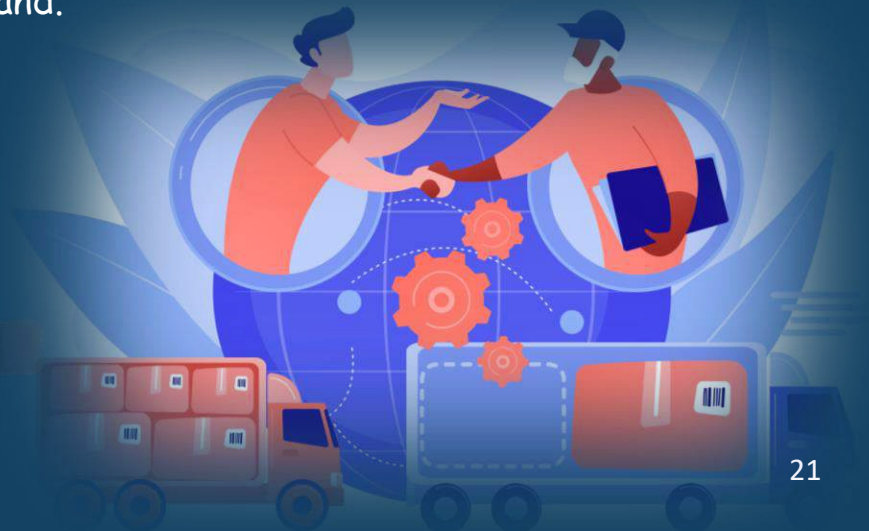
Air and Sea Association (ASA) Network: ASA is an exclusive logistics network for airfreight, sea freight, & Customs broker operations which will help generate more business for its members from its members as well as commercial contacts.

World International Freight Forwarder Alliance (WIIFA): WIIFA is the international freight forwarding credit cooperation platform under the network of Shipping China and also the International freight forwarding branch of China Federation of Logistics and Purchasing. 30 port committees, 19 overseas branches and 28 special service alliances with more than 1,100 domestic and foreign freight forwarding credit cooperation members distributing in 110 domestic cities and more than 60 overseas countries and regions.

Digital Freight Alliance (DFA): Digital Freight Alliance was founded in 2020 by DP World. One year later and we are at over 3200 members. The Alliance is an independent freight forwarders' association covering more than 190 countries. We provide members with web-based tools, networking and commercial opportunities across sea, air and land.



www.ucsanepal.com



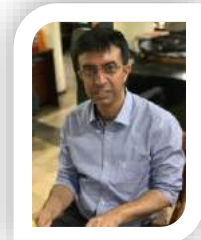
Team Members



Ms. Rita Dahal
(Chairman)



Mr. Dinesh Shrestha
(Finance Director)



Mr. Pratik Sharma
(Managing Director)



Mr. Rajendra Ban
(Director)





Contact Details

United Cargo of South Asia Pvt. Ltd.
Baluwatar, Kathmandu, Nepal



+977-01-4414603, 4413562



info@ucsanepal.com



www.ucsanepal.com



<https://www.facebook.com/ucsanepal>



<https://www.instagram.com/ucsanepal/>

www.ucsanepal.com